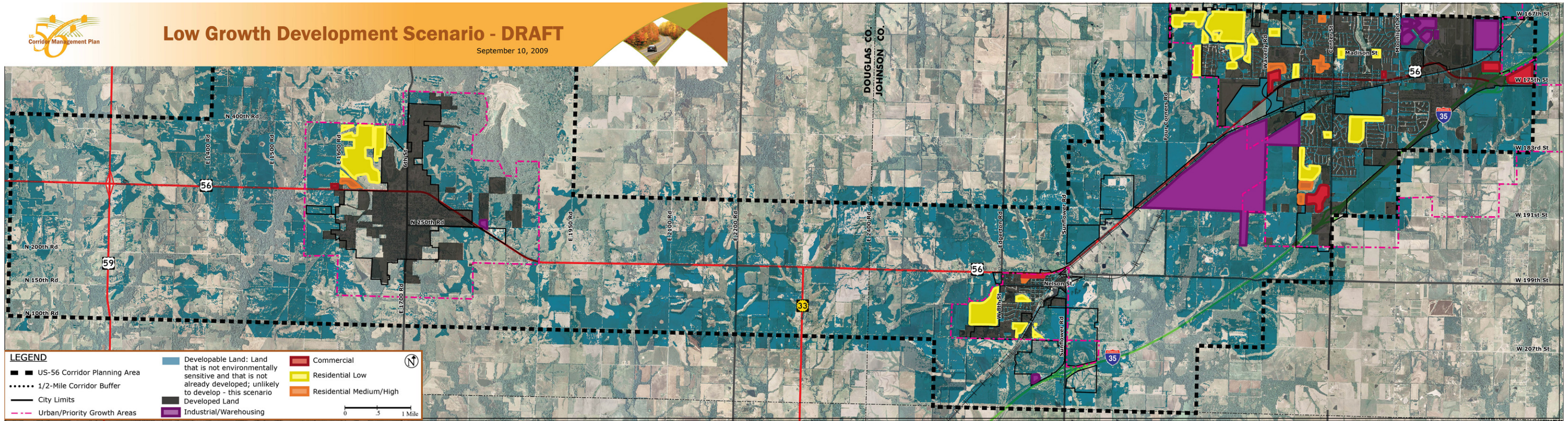




Low Growth Development Scenario - DRAFT

September 10, 2009



LEGEND

US-56 Corridor Planning Area	Developable Land: Land that is not environmentally sensitive and that is not already developed; unlikely to develop - this scenario	Commercial
1/2-Mile Corridor Buffer	Developed Land	Residential Low
City Limits	Industrial/Warehousing	Residential Medium/High
Urban/Priority Growth Areas		

0 0.5 1 Mile