



US-56 Corridor Management Plan

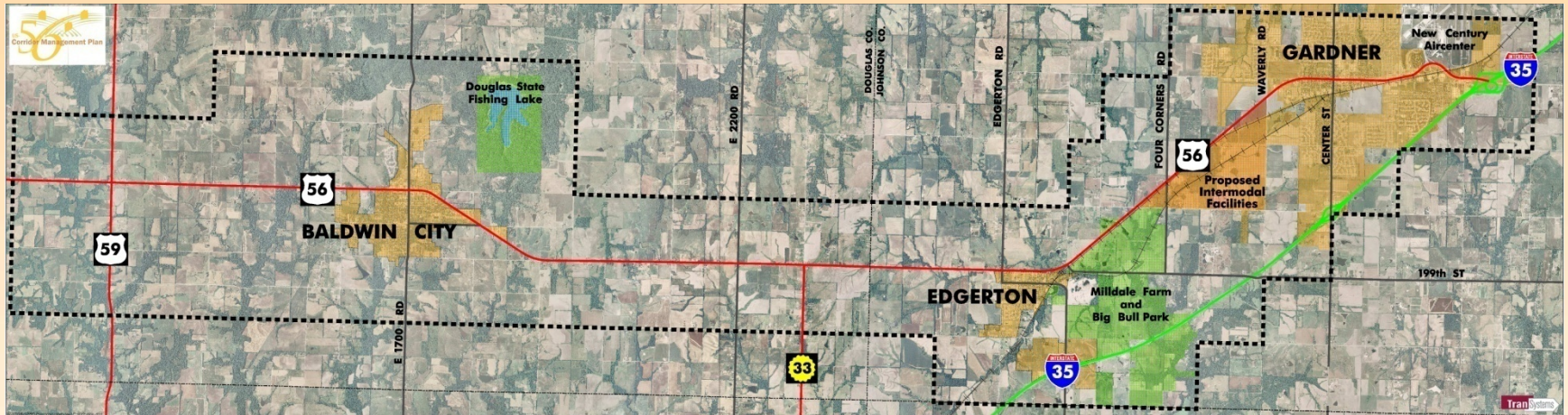
**Public Open Houses
February 9 and 11, 2010**

Participating Organizations

- Kansas Department of Transportation
- Douglas and Johnson Counties
- Cities of Baldwin City, Edgerton, Gardner
- Lawrence-Douglas County Metropolitan Planning Organization
- Mid-America Regional Council

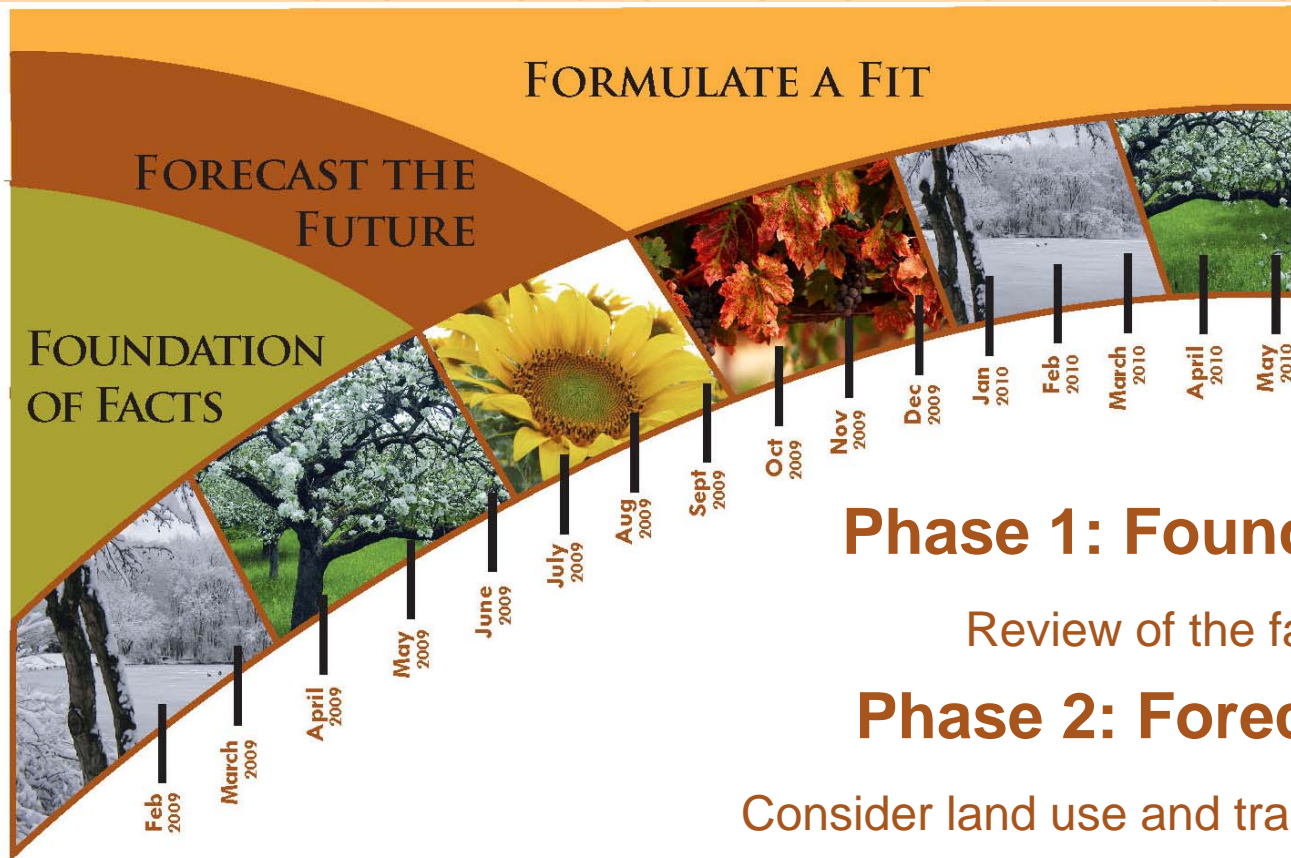


Study Area and Purpose



Purpose – To improve access management and capacity along US-56 in a way that supports the needs and addresses the concerns of the Corridor community.

Schedule and Process



Phase 1: Foundation of Facts –

Review of the facts with informed input

Phase 2: Forecast the Future –

Consider land use and transportation alternatives

Phase 3: Formulate a Fit –

Agreement on Management Plan including roadway elements, character and policies. Communities will adopt the Plan and enter into agreement



What has happened already?

This project began in early 2009, involving a wide range of partners.

The concepts shown for your review and comment this evening were developed with the input and guidance of:

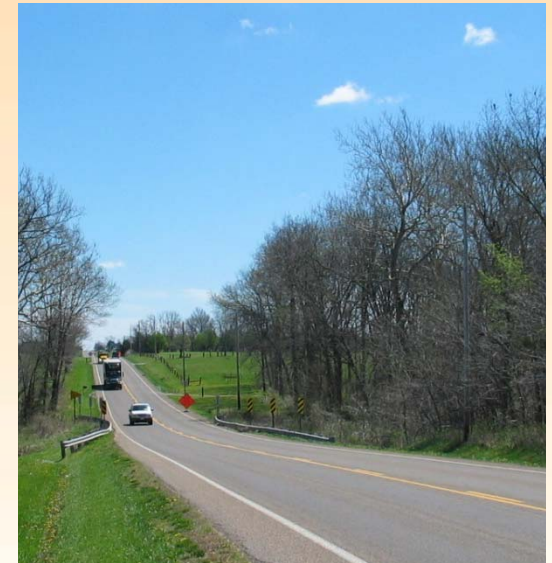
- the partner communities,
- area stakeholders,
- elected officials and
- a community survey.



What you'll see tonight

Various stations have been setup with information on the project phases, including:

- Foundations of Fact
- Forecasting the Future
- Formulating a Fit
- Public Involvement



Please take this opportunity to browse the stations and ask questions of staff!



What should I know about the project?

- The improvements are intended to serve a long-term vision of the corridor (Year 2040).
- Existing condition do not indicate the need for immediate improvements
 - Three bridges (all in Douglas County) are programmed for rehabilitation/reconstruction in 2013 (funding permitting).



When might changes take place?

- No funding has currently been identified for the conceptual improvements shown.
 - When funding becomes available, the concepts shown tonight will need to be further refined before implementation.
- As the Partners continue their coordination, development guidelines may be modified to reflect and assist in implementing the vision.



Will my property be affected?

- The improvements depicted for US-56 and the local street network are conceptual. Nonetheless
 - **Highway sections** show a potential right-of-way envelope (dashed to indicate a degree of uncertainty)
 - **Arterial sections** show a potential right-of-way line (solid to indicate a degree of certainty)



Will my property be affected?

- However, detailed design will need to be conducted to refine the concepts and determine right-of-way needs, if any.
 - And AGAIN, the concepts are not yet funded.



What happens to access along US-56?

Changes in access shown are conceptual in nature and subject to case-by-case review.

Access modification may occur with a change in use of the property (including redevelopment and development), when roadway improvements are constructed, and/or when a safety issue needs to be addressed.

There are no immediate plans to change any access points.



What happens next?

- The Partners will continue to coordinate on a variety of transportation planning activities including but not limited to:
 - Adopting the Corridor Management Plan
 - Modifying development codes along US-56
 - Coordinating the effects of other major transportation plans to the corridor



Questions and Comments

*Please see any of our staff
with questions.*

*Please fill out your comment card,
we want your input!*

