

Communities benefit from Corridor Management Plans because they facilitate the preservation of existing infrastructure and help position communities for sustainable growth.



MANAGING US-56

What is the Purpose of the US-56 Corridor Management Plan?

Because of increased potential for economic development and sensitivity to the amount of traffic new development could cause the area, the Kansas Department of Transportation (KDOT) and its partners will be working together for the next 15 months on the US-56 Corridor Management Plan. The purpose of the Plan is to improve access management and capacity along US-56 in a way that supports the needs and addresses the concerns of the Corridor community. KDOT's partners include: Douglas and Johnson Counties; the Cities of Baldwin City, Edgerton, and Gardner; Lawrence-Douglas County Metropolitan Planning Organization; and Mid-America Regional Council.

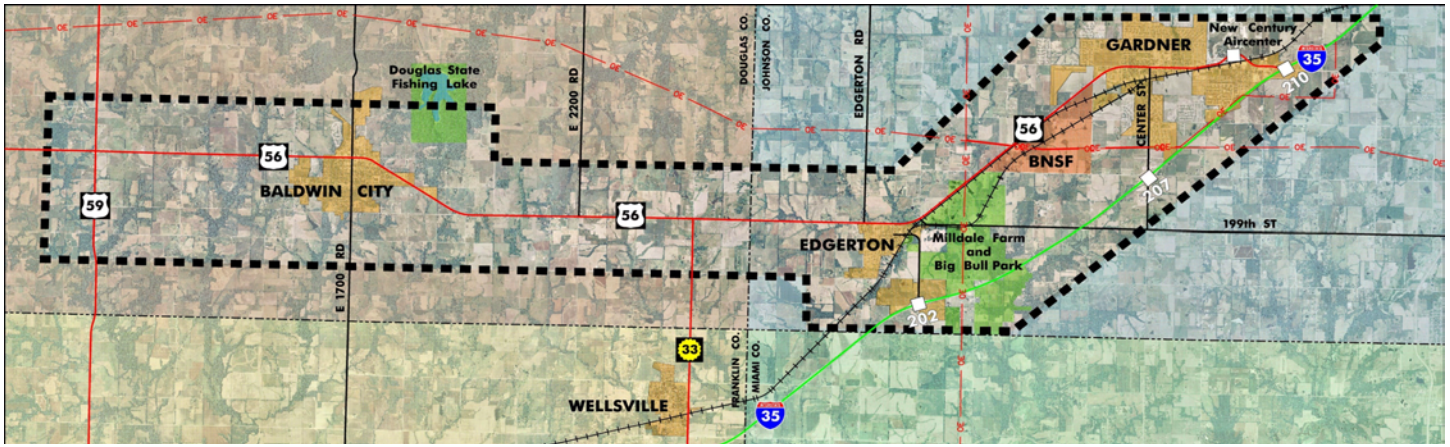
Planning For Variety

The 22-mile stretch of US-56 in the corridor planning area spans from US-59 west of Baldwin City in Douglas County to I-35 on the northeast edge of the city of Gardner in Johnson County. The corridor includes stretches of rural and agricultural uses, commercial development, major parks, and natural areas. It also has viable access to highway, rail, and air, making it a desirable location for future development. Most corridor residents live in Baldwin City, Edgerton, and Gardner.

What is Corridor Management Planning?

Corridor Management Plans create strategies for preserving highway investments by maximizing safe and efficient traffic movements and providing reasonable, safe access to adjacent development. A Corridor Management Plan outlines a strategy for sustainable development by:

- Analyzing traffic conditions and recommending improvements that will help maintain/improve traffic safety and operations as the corridor develops.
- Creating an access management plan that provides safe, reasonable access to development.
- Identifying land use patterns that complement the US-56 corridor and benefit the community as a whole.
- Studying economic trends to determine what growth the local economy can reasonably expect in the coming years.



US-56 Corridor Plan Area

DEVELOPING THE PLAN

One Phase at a Time

KDOT, partners, and stakeholders will be involved throughout the plan process. The corridor plan will be completed in 3 phases:

Phase 1: Foundation of Facts

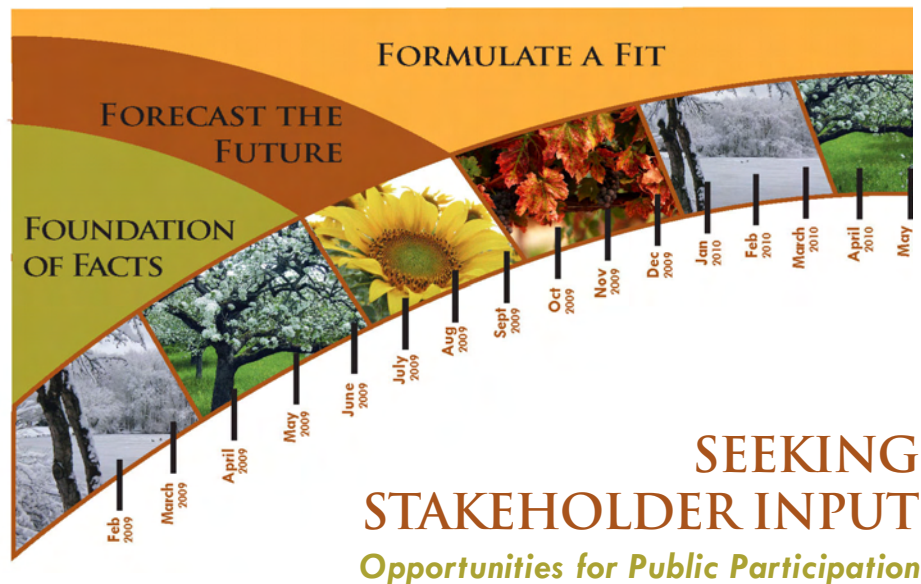
Facts will come from a review of land use and transportation data, supplemented by community input through a community survey, stakeholder interviews and workshop, and an Advisory Committee. The result will be a list of issues to be addressed throughout the planning process.

Phase 2: Forecast the Future

KDOT and its partners will consider environmental constraints and market factors in developing concepts for land use and transportation. Conceptual improvements for the roadway will respond to US-56's future land use and transportation needs.

Phase 3: Formulate a Fit

This phase will incorporate input from stakeholders, Advisory Committee, public officials, and the general public to help determine roadway elements, community character and public policies that are needed to implement the US-56 Corridor Management Plan.



SEEKING STAKEHOLDER INPUT

Opportunities for Public Participation

Since community concerns about US-56 vary along the corridor, KDOT and partners will work with stakeholders throughout the plan process. We need to hear from people like you.

A survey of corridor residents was conducted to gather opinions on US-56. Interviews of stakeholders from Douglas and Johnson Counties, Baldwin City, Edgerton, and Gardner who represent a wide variety of interests (emergency services, development, education, and community) will identify issues and concerns. Community leaders will serve on the plan's Advisory Committee and will participate in meetings throughout the planning process. The public will be invited to attend a public meeting in early 2010. A web site will be launched during the first phase of the project where you can track progress and submit your opinions. You will be able to access the web site through KDOT's Projects and Studies link: <http://www.ksdot.org/projects.asp>

Questions or Comments?



Visit the Project Web Site at:
www.us56corridorplan.org

Or Contact:

Kimberly Qualls, KDOT Public Affairs Manager at kqualls@ksdot.org or (785) 296-3881

David Gurs, KDOT Project Manager at dgurs@ksdot.org or (785) 296-3267

Jeff McKerrow, TranSystems Project Manager at jdmckerrow@transystems.com or (816) 329-8911